

劉韋志 (2023)

《血清素肉腸》 為長笛、雙簧管與單簧管三位演奏家

血清素 (Serotonin)、多巴胺 (Dopamine)、催產素 (Oxytocin) 及腦內啡 (Endorphin) 是人體最重要的四種激素，血清素受體影響著各種生物學和神經學相關之過程，例如滿足感、暴力攻擊行為、焦慮、食慾、認知、學習、記憶、噁心感、睡眠、性功能和體溫調節，也是多種藥物的靶標，包括抗抑鬱藥、抗精神病藥、減食慾藥、止吐藥、胃腸動力藥、抗偏頭痛藥、致幻劑和放心藥等。

肉腸 (Sausage) 又稱香腸或臘腸，指將動物血、肉或是凝固的內臟，絞碎成泥狀，再灌入腸衣製作的肉食保存技術，是一種在人類歷史中，最早於一千年以上就出現，且歐亞洲皆有的古老加工食品；肉腸在許多文化中亦象徵男性的生殖器官。

血清素與肉腸兩者放置一起成為標題，指涉了本作將呈現的各種可能的質地，亦是藉由兩者借代人性的原始慾望與行為。

本作品由國家文化藝術基金會贊助

總長約 13 分

編制：

Flutist- Flute + Bass flute + head joint of Alto flute + Piccolo

Oboist- English horn + Oboe d'amore + reed of English horn + Oboe

Clarinetist- Clarinet (in B_♭) + Bass clarinet (in B_♭) + Soprano clarinet (in E_♭)
+ Contrabass clarinet

符號與縮寫：

∅ = 盡可能無聲

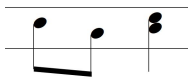
→ = 逐漸改變

---→ = 持續

norm. = normally 常態地演奏法

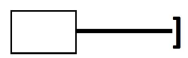
♭ ♮ # ## = 降 3/4 降 1/4 升 1/4 升 3/4

♭ ♭ # ♯ ♯ = 微降與微升

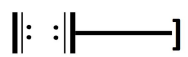


= 雙線譜，相對音高或相對位置的記譜

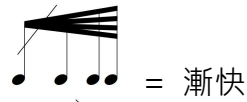
H M L = 高音區 / 中音區 / 低音區



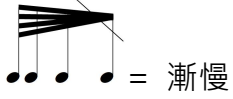
= 持續方框中的指示或素材至長線結束處



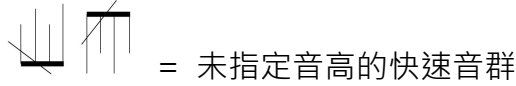
= 反覆素材至長線結束處



= 漸快



= 漸慢



= 未指定音高的快速音群

port. = portamento 在某一音高停留一段時間後再向上或向下滑奏

po = position ordinary 一般常態位置

▲ Δ = 最高音

▼ ∇ = 最低音

nv = non vibrato 不抖音

∩ = double tonguing

∩∩ = triple tonguing

air = air sounds

Φ = tone mixed air sounds

air- inside = Producing air sounds inside the flute. (長笛)

reference: <https://youtu.be/9cGJ-Y1Evil?si=QFOMOmqb05EIVJZK&t=94>

air- sweeps = Opening the mouth as wide as possible without losing the seal around the mouthpiece. First on the Bb clarinet, from narrow to wide mouth/throat position.

reference:

<https://heatherroche.net/2014/02/13/on-writing-air-sounds-for-clarinets/>



□ = 無音高的吸允聲——短音、長音；

對著吹孔吸允嘴唇 (長笛) / 吸允吹嘴 (單簧管)



◻ = 吸允竹片產生音高——短音、長音 (雙簧管)



◻ = 吸允竹片或吹嘴一下後，嘴部立即離開樂器產生無音高的吸允聲 (雙簧管、單簧管)

R = roar 對著吹嘴口發出吼聲

Ⓜ = multiphonics

Ⓣ = tongue ram (長笛) / slap tongue (雙簧管、單簧管)

h. gliss. = harmonics glissando

jw = jet whistle (長笛)

pizz. = lip pizzicato / tongue pizzicato (長笛)

w.t. = whistle tones (長笛)

bite = bite the reed by teeth to achieve a fairly random high pitch (單簧管)

squeak = play with the wrong voicing to produce squeaking sounds (雙簧管)

s-Ⓜ = spectral multiphonics (雙簧管、單簧管)

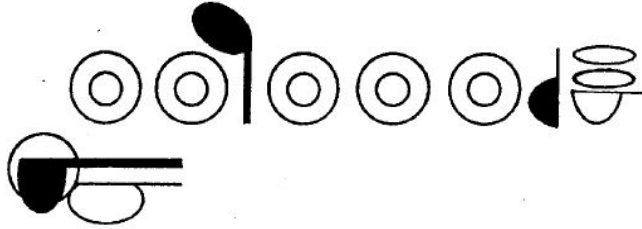
長笛參考指法 1— reference: Robert Dick- *il flauto*



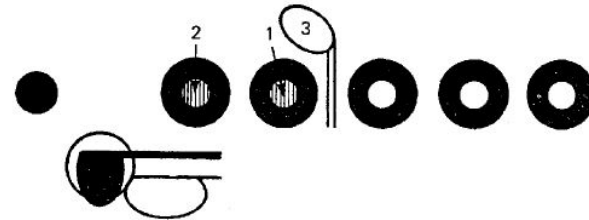
Ripetere le diteggiature del glissando IIIa, alzate di un'ottava.
Ripetere le diteggiature da 1 a 3 del glissando IIIb, alzate di un'ottava.

fine:

pollice sul Sib



inizio:



1. Far scivolare il dito dal foro della chiave del SOL.
2. Far scivolare il dito dal foro della chiave del LA.
3. Abbassare attentamente la chiave del SOL#.

Serotonin Sausage for flutist, oboist and clarinetist

transposed score

$\text{♩} = \text{c. } 66$

The score is divided into four systems, each starting with a measure number in a box:

- System 1 (Measures 1-5):** Features Flute, English Horn, and Clarinet in B. Dynamics range from *pp* to *sfz*. Includes markings like "Freeze don't move", "gliss.", "pizz.", and "squeak".
- System 2 (Measures 6-10):** Features Flute, Oboe, and Clarinet. Dynamics range from *f* to *pp*. Includes markings like "blow", "n.v.", "ord.", and "pizz.". A note: **) ◊ = 按鍵音高* (key pitch).
- System 3 (Measures 11-15):** Features Flute, Oboe, and Clarinet. Dynamics range from *sf* to *pp*. Includes markings like "flz.", "gliss.", "bite", and "sim.". A note: **) ◊ = 按鍵音高*.
- System 4 (Measures 16-20):** Features Flute, Oboe, and Clarinet. Dynamics range from *sfz* to *pp*. Includes markings like "w.t.", "gliss.", "blow", and "sub. p". A note: **) 以滑動嘴唇位置改變音高* (change pitch by sliding lip position).