



西野壯平 Sohei Nishino

Diorama Map Berlin, 2012

light jet 輸出於 Kodak Endura 相紙

light jet print on Kodak Endura paper

97 x 119 cm

附藝術家標籤（含作品名稱、簽名、版次）

Accompanied by a titled, signed and editioned artist's label

Edition 8 of 15 plus 2 artist's proofs



鈴木展 Hiraku Suzuki

bacteriasign, 2014 - 2019

木板土、枯葉、壓克力 earth, dead leaves and acrylic on wooden panel

55 x 55 x 3 cm each



鈴木展 Hiraku Suzuki

Constellation #50, 2021

畫布銀墨、土、壓克力 silver ink, earth, and acrylic on canvas

194 x 130 x 3 cm



西野壯平 Sohei Nishino

Mountain Lines, Everest, 2019

無酸噴墨於 Hahnemuhle Photo-Rag Baryta 相紙

archival pigment print on Hahnemuhle Photo-Rag Baryta paper

185 x 105.4 cm

附藝術家簽名標籤貼紙

Accompanied by a signed label from the artist

Edition 6 of 15 plus 2 artist's proofs

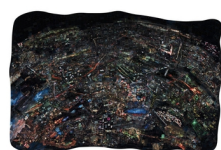


鈴木展 Hiraku Suzuki,

Constellation #49, 2021,

畫布銀墨、土、壓克力 silver ink, earth, and acrylic on canvas

100 x 75 x 5 cm



西野壯平 Sohei Nishino

Diorama Map Night, 2010

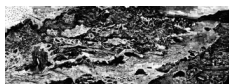
無酸噴墨於 Hahnemuhle Photo-Rag Baryta 相紙

archival pigment print on Hahnemuhle Photo-Rag Baryta paper

231 x 150 cm

附藝術家標籤（含作品名稱、簽名、版次）

Accompanied by a titled, signed and editioned artist's label



西野壯平 Sohei Nishino

Waves Part 1- Izu Peninsula, 2021

無酸噴墨於 Hahnemuhle Photo-Rag Baryta 相紙

archival pigment print on Hahnemuhle Photo-Rag Baryta paper

55 x 155.7 cm

附藝術家簽名標籤貼紙

Accompanied by a signed label from the artist

Edition 2 of 15 plus 2 artist's proofs



西野壯平 Sohei Nishino

Waves Part 2- Izu Peninsula, 2021

無酸噴墨於 Hahnemuhle Photo-Rag Baryta 相紙

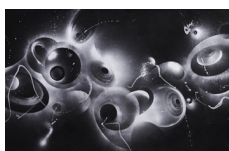
archival pigment print on Hahnemuhle Photo-Rag Baryta paper

60 x 140 cm

附藝術家簽名標籤貼紙

Accompanied by a signed label from the artist

Edition 2 of 15 plus 2 artist's proofs



鈴木展 Hiraku Suzuki

Photon Flux #05, 2021

紙上銀墨與墨 silver ink and Chinese ink on paper

100 x 157 cm



鈴木展 Hiraku Suzuki

Excavated Reflections(Orbits) #2, 2021

雷射切割不鏽鋼

laser cut stainless steel

50 x 37 x 3 cm Edition 1 of 3



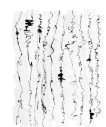
西野壯平 Sohei Nishino

Study of Anchorage 0011, 2021

無酸噴墨於伊勢和紙

archival pigment print on Ise Washi paper

90 x 45 cm Edition 1 of 3



西野壯平 Sohei Nishino

Study of Anchorage 002, 2021

無酸噴墨於伊勢和紙

archival pigment print on Ise Washi paper

62 x 45 cm Edition 1 of 3