

演出音樂音效控制 與編程(基礎)

Programming and Control Sound Cue in
Performance
(Basic)

Blackrice 
Creative Studio
黑米創意工作室

賴韋佑

一、軟體



Qlab (Mac OS only)

USD 399 (Pro Audio)



Show Cue System (Windows only)

USD149 (Professional)



Go Button (iOS only)

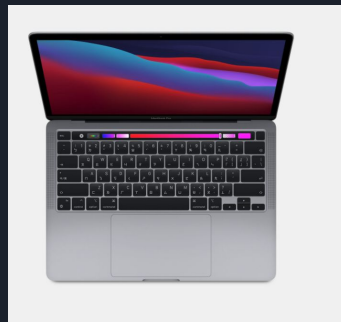
USD99.99 (Professional)

Live

Ableton Live (Mac/Win)

USD449 (Standard)

二、硬體



+



Audio
Interface

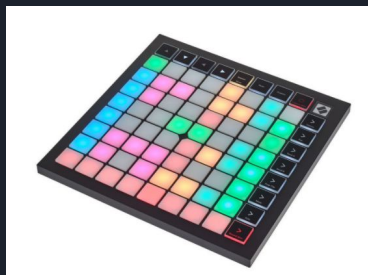


Mixer



SOUND
SYSTEM!

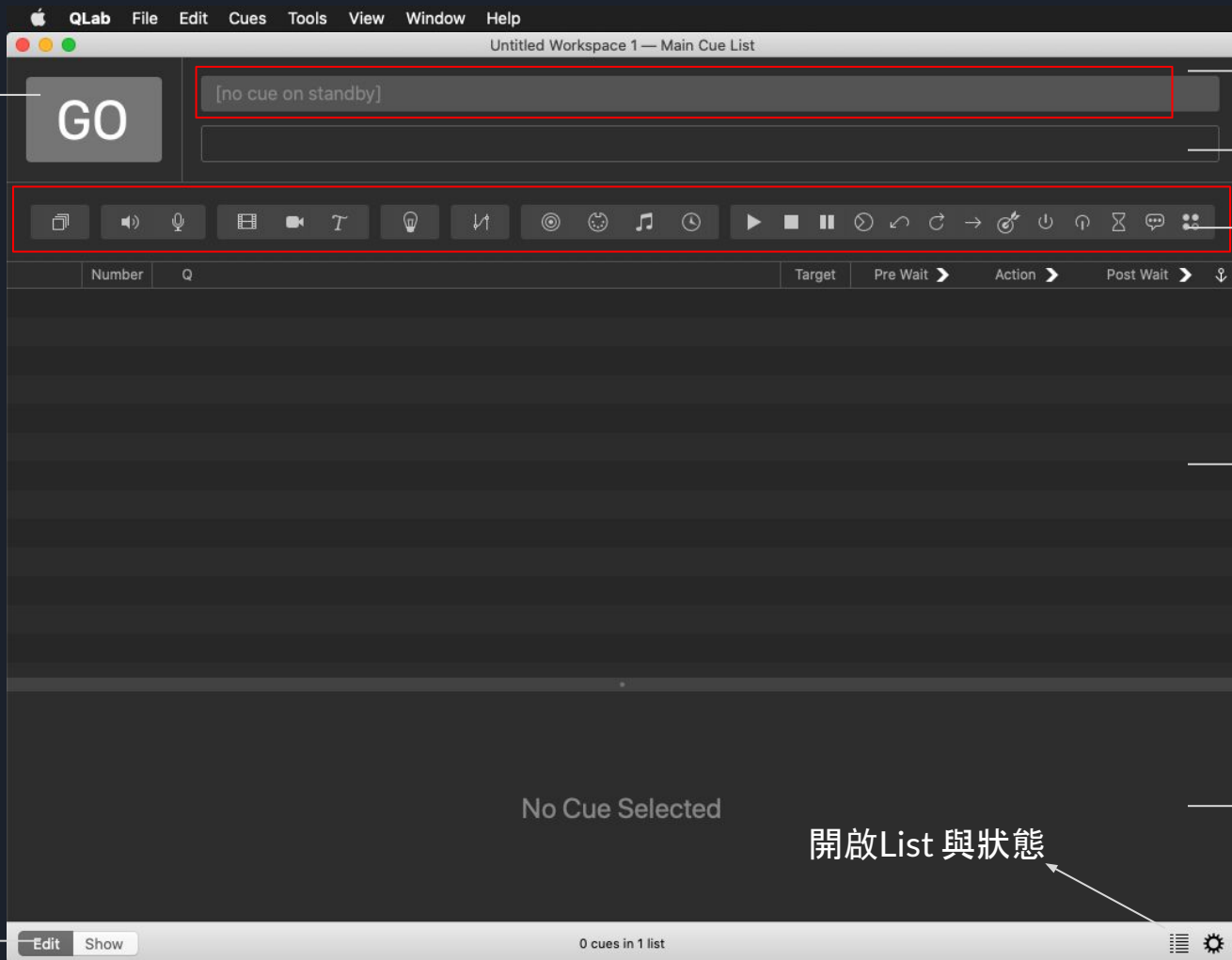
三、控制器



GO
(執行Standby的
Cue)

空白鍵

模式切換



Standby的Cue Name

Standby的Cue
筆記

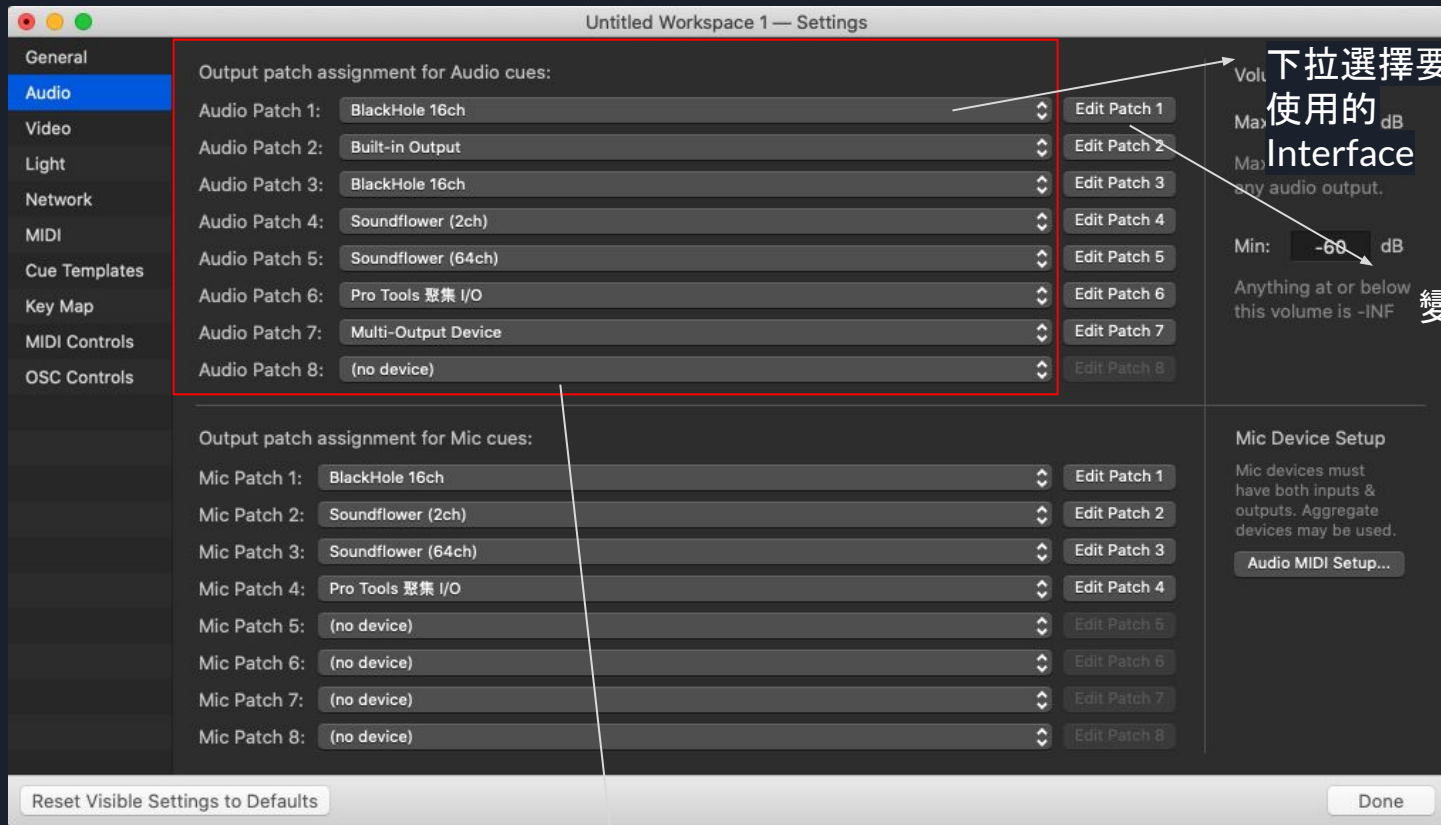
Cue工具區

Cue List

Cue 編輯區

設定

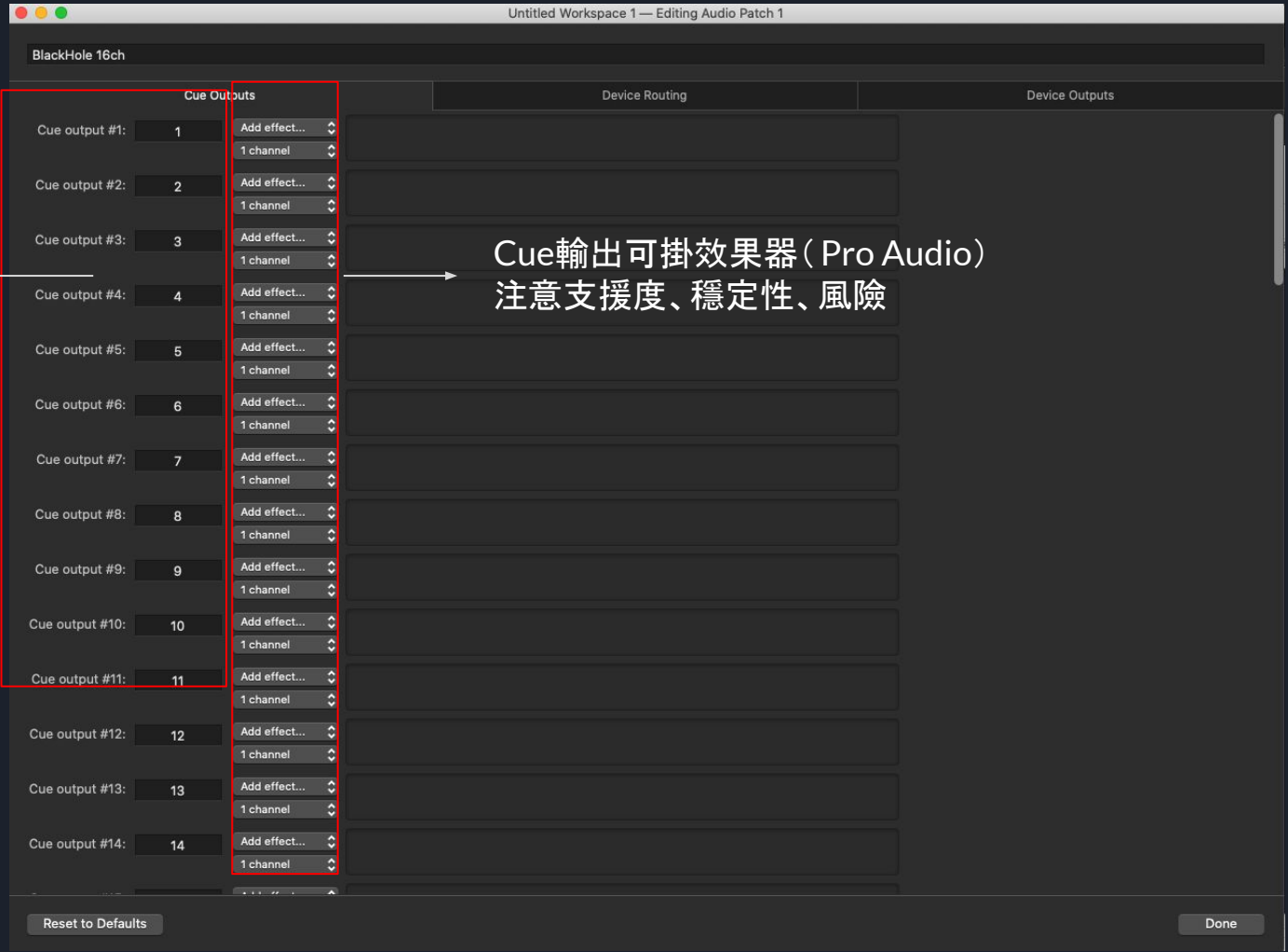
開啟List 與狀態



下拉選擇要
使用的
Interface

變更路徑內容

可設定8種
不同路徑至
Interface



Cue輸出, 可自訂名稱例如:

Main L,R
Monitor
US Monitor
Sub-Woofer

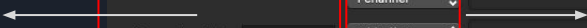
Vocal Mix

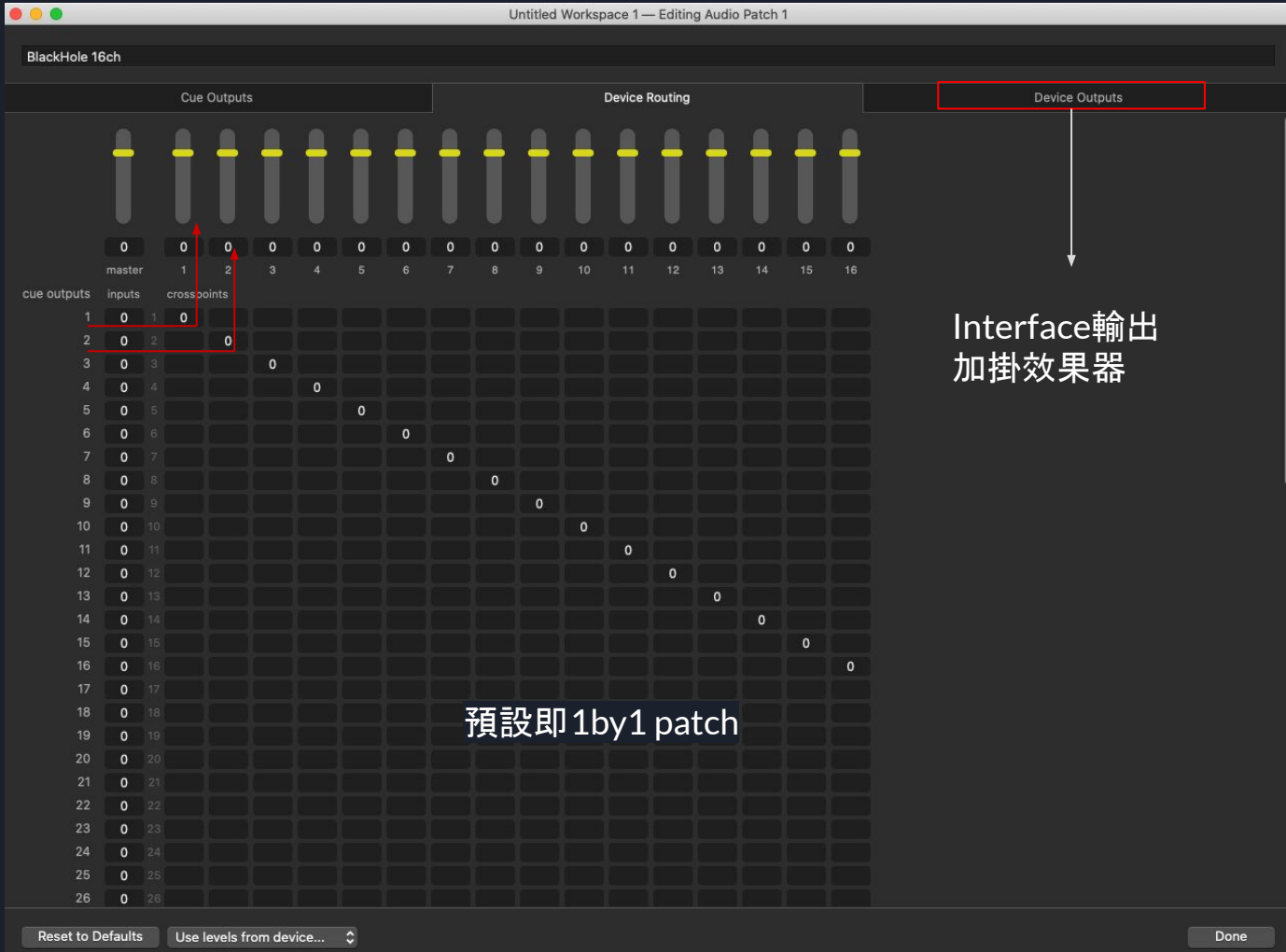
Reverb

etc.

最多可有 64組

Cue輸出可掛效果器 (Pro Audio)
注意支援度、穩定性、風險





Cue輸出送至
Interface硬體
實際輸出調整

及硬體音量
Master控制

Interface輸出
加掛效果器

預設即1by1 patch

Qlab Audio Routing

Interface Out

Channel數根據硬
體而定

Audio File

Mp3
Wav

一般常見為
1 ch or 2 ch

多軌(Poly-wav)

Qlab Cue Out

最多64
Channel



建立一個Audio Cue

GO之後
等待時間才執行

執行完後等待時間才繼續往下

連動下一個 Cue

執行時程

GO

1 - (Untitled Audio Cue)

Notes

Number	Q	Target	Pre Wait	Action	Post Wait
1			00:00.00	00:00.00	00:00.00

類型 Q號碼 Q名稱 Q目標

狀態 不一定 只有數字

基本 觸發 時間與循環 音量 檔案音量校正 效果

Basics Triggers Time & Loops Audio Levels Audio Trim Audio Effects

Number: 1 Name: []

Duration: 00:00.000 Target: Double click or drag a file here.

Pre Wait: 00:00.000 Flagged

Post Wait: 00:00.000 Auto-load

Continue: Do not continue Armed

Notes

Edit Show

1 cue in 1 list

目標 (電腦檔案)

變換顏色

Basics Triggers Time & Loops Audio Levels Audio Trim Audio Effects

Number: 1 Name:

Duration: 00:00.000 Target: Double click or drag a file here.

Pre Wait: 00:00.000 Flagged

Post Wait: 00:00.000 Auto-load

Continue: Do not continue Armed

Notes

標記 (出現在警示列)

分離視窗

開始與結束時間點 (或可直接拉波型中的三角形標示)

調整音量曲線 *

全部播放次數

The screenshot shows the 'Time & Loops' tab of an audio editing application. The interface includes a top navigation bar with tabs for 'Basics', 'Triggers', 'Time & Loops', 'Audio Levels', 'Audio Trim', and 'Audio Effects'. On the left, there are controls for 'Start time' (00:00.000), 'End time' (02:11.107), 'Play count' (1), and an 'Infinite loop' option (∞). The main area displays a blue audio waveform on a dark background with a time axis from 00:00 to 02:00. On the right, there are checkboxes for 'Use integrated fade', 'Lock fade to start/end', a 'Rate' control (set to 1), and 'Preserve pitch'. At the bottom right, there are zoom and playback controls. Annotations with arrows point to various elements: '開始與結束時間點 (或可直接拉波型中的三角形標示)' points to the start and end time fields; '全部播放次數' points to the play count field; '無限循環' points to the infinite loop option; '調整音量曲線 *' points to the 'Use integrated fade' checkbox; '縮放' points to the zoom controls; '增加切點(可循環片段)' points to the 'Add Slices' button; and '預覽播放檔案' points to the playback controls.

無限循環

縮放

增加切點(可循環片段)

預覽播放檔案



校正檔案音量(固定值)



設定Audio路徑

設定至Cue out音量(可經由Fade變動)

連動綁定

顯示Cue out 數量(最多64)

檔案至Cue out 混音Routing

Fade Cue

The screenshot displays the 'Main Cue List' window in a software application. At the top left, there is a large 'GO' button. Below it, a text field contains '2 · fade Suzanne Vega - Tom's Dinner.wav' and a 'Notes' field. A toolbar with various icons is positioned below the text fields. The main area features a table with the following data:

	Number	Q	Target	Pre Wait	Action	Post Wait
	1			00:00.00	02:11.11	00:00.00
X ↵	2		1	00:00.00	00:03.00	00:00.00

Below the table, there are buttons for 'New List', 'New Cart', and 'Open in New Window'. The bottom section of the interface is a configuration panel with tabs for 'Basics', 'Triggers', 'Curve Shape', 'Audio Levels', and 'Audio Effects'. The 'Basics' tab is active, showing the following settings:

- Number: 2
- Name: fade Suzanne Vega - Tom's Dinner.wav
- Duration: 00:03.000
- Target: 1 Suzanne Vega - Tom's Dinner.wav
- Pre Wait: 00:00.000
- Post Wait: 00:00.000
- Continue: Do not continue
- Armed:

A 'Notes' field is also present in the configuration panel. At the bottom of the window, there are 'Edit' and 'Show' buttons, a status bar indicating '2 cues in 1 list', and system icons for help, list, and settings.

Fade行程結束後停止目標 Cue
(最常用於 Fade out Audio)

絕對值與相對值切換
需注意若「相對值」至[-inf] 則
後面的cue數值無法再變大



快速設定為全靜音

Fade 到的「目標音量」
需滑鼠點選Fader為「黃色」
才有作用

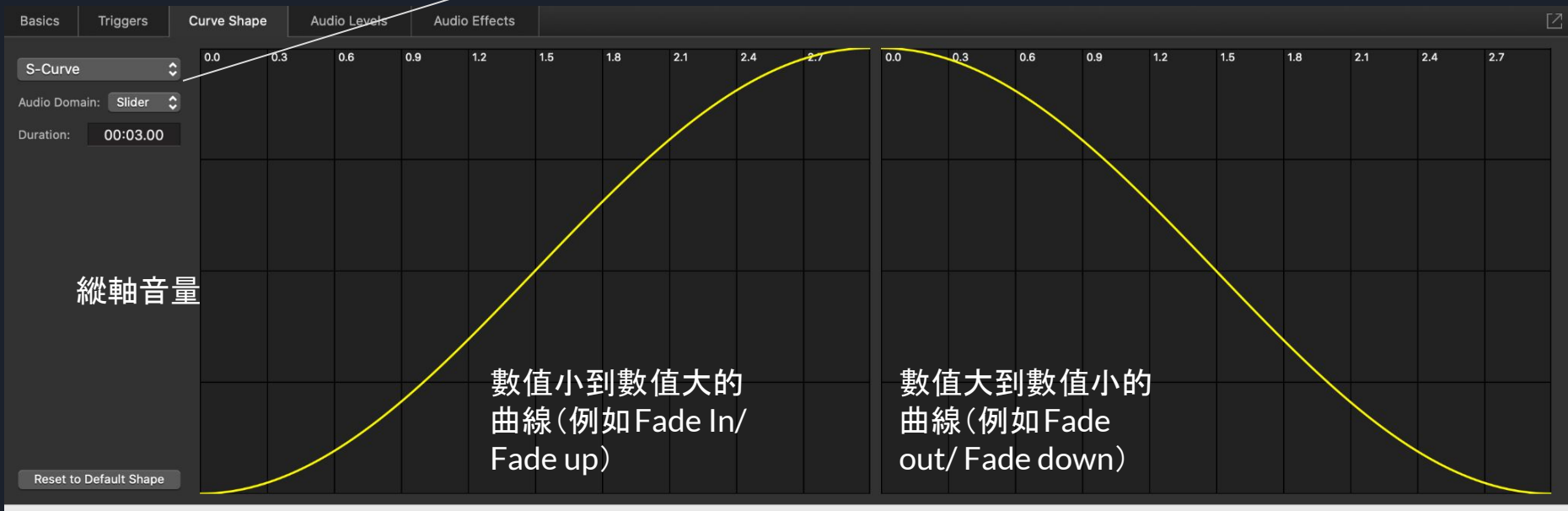
若再點選一次變為灰色，那一
個Channel 則不動作

快速設定為目標原音量

預覽Fade目標後結果
若關閉則需執行此 Fade cue才有作
用

Fade 數值變化曲線

切換曲線類型 / 縱軸類型



橫軸為時間

選擇性貼上 - Command +Shift+V

Paste attributes from '1 · Suzanne Vega - Tom's Dinner.wav' in clipboard to '2 · fade Suzanne Vega...

▶ <input type="checkbox"/> Basic Properties	Space = Toggle Selected
▶ <input type="checkbox"/> Triggers	Presets:
▶ <input type="checkbox"/> Time & Loops	a Toggle All
▶ <input type="checkbox"/> Fade	c Clear
▶ <input type="checkbox"/> Audio	p Toggle Previous Set
	1 Toggle Audio Levels
	2 Toggle Video Geometry
	3 Toggle Integrated Fade Curve

Default: Clear ▾

Cancel Apply

Group

Basics

Triggers

Mode

Timeline

The group mode determines how the group cue will behave when it is triggered during playback.

- Timeline - Start all children simultaneously
- Start first child and enter into group
- Start first child and go to next cue
- Start random child and go to next cue

時間軸/同時執行子項目

執行第一個子項目後，進入 Group 裡面繼續執行

執行第一個子項目後，跳到 Group 外面的下一個 cue

隨機執行一個子項目後，跳到 Group 外面的下一個 cue

Cue 與 Cue 之間

Continue:

Do not continue



Auto Continue

與下面一行 cue 同時執行



Auto Follow

此行 Cue 走完後自動執行下一行 Cue

綜合運用

1. Fade in Q1到0, Q1.5設定為Q1的Fade小聲七秒, Q1.6為Fade out 10秒
2. Q2開始為-20音量, Q2.1聲音Fade大至-5, 到達-5之後維持五秒後再一秒內回到-20, Q2.5為Fade out
3. Q3從-30 Fade in 到0(五秒), Q4為Cross Fade8秒到下一個音樂
4. Q5從左聲道Fade in,再從右聲道Fade out

Midi 控制

General

Audio

Video

Light

Network

MIDI

Cue Templates

Key Map

MIDI Controls

OSC Controls

GENERAL

LIGHT DASHBOARD

Listen on MIDI Channel: Any Used for general MIDI controls, and may be used on individual cue triggers or light controls.

Use MIDI Show Control Device ID: 0 Device ID 127 is always monitored.

When enabled, QLab will respond to GO, STOP, RESUME, LOAD, ALL_OFF, STANDBY+/-, SEQUENCE+/-, and RESET commands.

Use "Musical" MIDI Controls

	Command	Byte 1	Byte 2	
GO	Note On	40	40	Capture
Preview Selected	(None)			Capture
Load	Note On	40	48	Capture
Panic Selected	(None)			Capture
Pause/Resume Selected	(None)			Capture
Panic All	Note On	40	47	Capture
Pause All	Note On	40	42	Capture
Resume All	Note On	40	46	Capture
Reset All	(None)			Capture
Playhead Previous	Note On	40	43	Capture
Playhead Next	Note On	40	44	Capture

Reset Visible Settings to Defaults

Done

Midi 控制-個別Cue

Basics	Triggers	Time & Loops	Audio Levels	Audio Trim	Audio Effects
Hotkey Trigger:	<input type="checkbox"/> [Empty] [X]				
MIDI Trigger:	<input type="checkbox"/> Note On [Dropdown] [0] [0] [Capture]				
	Workspace Channel (Any) [Dropdown]		Note	Velocity	
Wall Clock Trigger:	<input type="checkbox"/> [Empty]	24 hour [Dropdown] Every Day			
Timecode Trigger:	<input type="checkbox"/> [Empty]	Timecode [Dropdown]			
When starting the action of this cue:					
<input type="checkbox"/> Fade & stop [peers] [Dropdown] over time: 00:01.0					
<input type="checkbox"/> Duck audio of other cues in this list while running.					
Duck by: 0 Over time: 00:01.0					
If running, a second trigger: does nothing [Dropdown]					
<input type="checkbox"/> Second trigger on release. (Hotkey, MIDI Note, cart)					

Blackrice 
Creative Studio
黑米創意工作室