

參與國際文化交流活動報告書

王虹凱

一、活動或計劃基本資料

1. 活動或計劃名稱：要我就接受真正的我吧！(Accept Me for What I Am, If You Want Me)
2. 主辦單位：國際仁川女性藝術家雙年展 (International Incheon Women Artists' Biennale 2009)
3. 活動或計劃時間：2009年8月1~31日
4. 活動或計劃：韓國仁川
5. 活動簡介：第二屆國際仁川女性藝術家雙年展由仁川市政府主辦，國際仁川女性藝術家雙年展委員會承辦，分為「Main Exhibition」、「Tuning」和「Participation」三個獨立展覽部份。「Main Exhibition」由美國紐約獨立策展人 Thalia Vrachopoulos 博士和泰國藝術家/策展人 Sutthirat Supaparinya 策劃，「Tuning」由韓國策展人 Heng-Gil Han 策劃，「Participation」則開放給仁川當地藝術家參加。

我的作品獲邀在「Main Exhibition」展出。「Main Exhibition」主題為 Closer Yet So Far Away...，探討女性在個人、心理、工作、社會等空間裡的不同處境，參展藝術家根據【Fluid Interior】、【My Space】和【Contested Realities in Space】三個子題而創作。此雙年展是第一個以當代女性藝術家為主的國際性雙年展。展覽場地位於靠近中國城和日本城的仁川多媒體藝文中心 (Art Platform)，佔地約 3016 平方尺。

6. 藝術家或團體的遴選方式：由策劃人邀請各國藝術家提出作品企劃案，經雙年展委員會審核獲選。
7. 本屆及歷年參與之臺灣藝術家或團體名單：李明維、陳界仁、林佳真。
8. 主辦單位聯絡方式：
連絡人：Eunhee Yang
電話：82-32-772-7727
傳真：82-32-772-7274
網址：<http://www.iwabiennale.org/>

二、主辦單位對膳宿及交通的安排方式：

1. 食的部份 - 尚可。
說明：「Main Exhibition」的藝術家必須自己打點三餐，「Tuning」的藝術家的三餐皆由「Tuning」的策劃單位招待。
2. 住的部份 - 非常滿意。
說明：主辦單位安排我在 Art Platform 藝術駐村的宿舍，環境整潔舒適。
3. 當地交通安排 - 尚可。
說明：由於準備工作繁重，我自己搭火車拜訪首爾兩次，在仁川的交通皆步行。

三、主辦單位負擔條件為何？

1. 運費：由於我的作品必須在當地製作，運費等於我的旅行費。機票費由國藝會的補助金支付。
2. 布展協助：室外表演 - 主辦單位負責租用小貨車和協調司機的時間，印製作品用的布條，安排 video 攝影師的時間；室內展覽 - 主辦單位提供電視機和 DVD 放映機，協助安裝以上機器和喇叭、擴大器。
3. 文宣廣告：主辦單位負責印製所有的文宣品，包括畫冊、傳單、展覽索引、布條和相關印刷品，製作網站，並安排所有的媒體公關。
4. 保險費：無。
5. 住宿費：主辦單位安排 10 日的住宿。
6. 安排當地拜訪或參觀行程：無。
7. 安排與計劃有關之活動（包括成果發表）：無。

四、活動場地相關資料：

1. 場地名稱：Incheon Art Platfor, Incheon Korean-Chinese Cultural Center, Incheon Educational and Cultural Center for Students, Incheon Weather Station, Incheon City Historical Data Office, Chemulpo Club, Freedom Park, Gallery Jayu。

2. 活動場地簡介：

		
開幕剪綵	記者會	藝術家座談會
		
藝術家合影	藝術家與觀眾座談	開幕活動
		
研討會	研討會	

3. 活動照片：

<p>《要我就接受真正的我吧！》，雙年展展場</p>	<p>《要我就接受真正的我吧！》，雙年展展場</p>
<p>《要我就接受真正的我吧！》，仁川市街上</p>	<p>《要我就接受真正的我吧！》，仁川市街上</p>
<p>《要我就接受真正的我吧！》，仁川市街上</p>	<p>《要我就接受真正的我吧！》，仁川市街上</p>
<p>《要我就接受真正的我吧！》，仁川市街上</p>	<p>《要我就接受真正的我吧！》，仁川市的公園</p>



《要我就接受真正的我吧！》，仁川市街上



《要我就接受真正的我吧！》，仁川市街上

五、相關附件：

1. 主辦單位簡介：請閱附件。
2. 宣傳單/邀請卡：請閱附件。
3. 當地媒體相關報導剪報：請閱附件。

Wd
2009

INTERNATIONAL INCHEON WOMEN ARTISTS' BIENNALE

So Close Yet So Far Away

2009. 8. 1 ~ 8. 31

Venue : Incheon Art Platform, Incheon Korean-Chinese Cultural Center, Incheon Educational and Cultural Center for Students, Incheon Weather Station, Incheon Metropolitan City, Historical View, Chemulpo Club, Freedom Park, Hongyemun, Gallery Jayu

Auspices : The Metropolitan City of Incheon
Organizer : Incheon Women Artists' Biennale organizing committee

Official Patrons : Ministry of Culture, Sports & Tourism, Ministry of Gender Equality, Ministry of Foreign Affairs & Trade, Incheon Metropolitan Council, Incheon Metropolitan Office of Education, Korea Railroad, Incheon Rapid Transit Corporation, OBS Gyeongin TV

인천여성미술비엔날레

가까이 그리고 멀리

2009. 8. 1 ~ 8. 31

장소 : 인천아트플랫폼, 한중문화관, 인천학생교육문화회관, 인천기상대, 인천역사자료관, 제물포구락부 외 자유 공원, 흥예문, 갤러리 자유

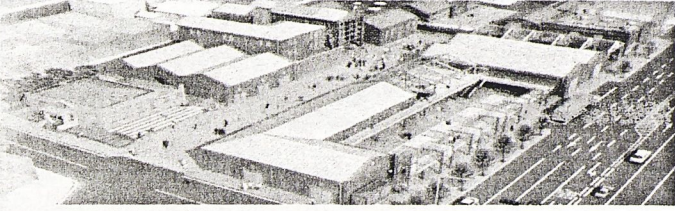
주최 : 인천광역시

주관 : (사)인천여성미술비엔날레조직위원회

후원 : 문화체육관광부, 여성부, 외교통상부, 인천광역시의회, 인천광역시교육청, 한국철도공사, 인천광역시지하철공사, OBS경인TV

인천아트플랫폼 Incheon Art Platform

대한민국 개항역사의 산물인 창고건물들이 인천여성미술비엔날레 개막전을 시작으로 문화공간으로 다시 태어납니다.



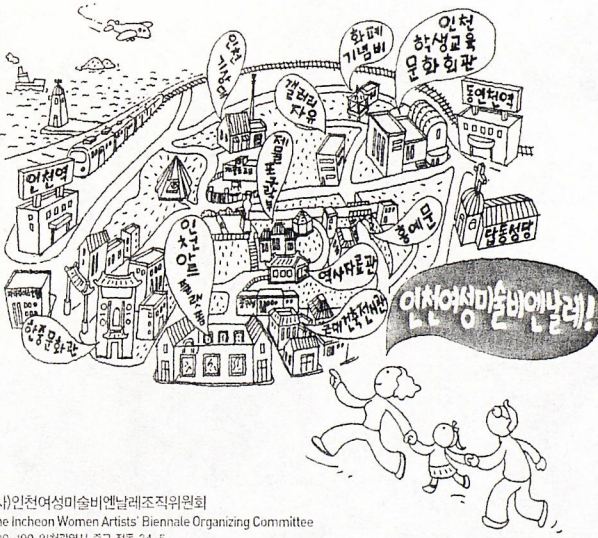
400-021 인천광역시 중구 해안동 1가 10-1 / 10-1 Haean-dong 10-ga Jung-gu Incheon, 400-021 Korea

The Warehouse Buildings - the products of Korea's open port history - are reborn into an art space

Incheon Art Platform is located at 1-ga Hae-an-dong Jung-gu, Incheon and is composed of thirteen aged buildings that were built at the time of the port opening in the late 19th century. Seven of the buildings are restored and the remaining six buildings are remodeled or renovated.

Buildings, such as Daeheung Corp. built in 1886 [Cultural Property No. 248], Korea Express Co., Ltd. warehouse built in 1948, Samwo Printing Company built in 1942, and Daejin Sangsa Company building built in 1948, preserve the Korean history of pre-colonial era of the opening of the port in the 19th century and the modern history of Incheon's post-colonial period. These spaces are renovated for artists to use as creative and educational spaces that including galleries, studios, workshop spaces, data collection, art shop, and multi-purpose spaces.

The 2009 International Incheon Women Artists' Biennale will present a number of significant artworks by national and international artists that will take place during the month of August 2009 and will be located in this historic site that still exudes and embodies the century-old atmosphere of modern Korean culture and architecture.



(사)인천여성미술비엔날레조직위원회
The Incheon Women Artists' Biennale Organizing Committee
400-190 인천광역시 중구 진동 34-5
Tel. 032-772-7727, 7772, 7733 Fax. 032-772-7274 www.iwabiennale.org

Review

2004 제1회 인천여성미술비엔날레
The 1st Incheon Women Artists' Biennale

행사주제_ 여성-좌절과 기쁨 Women-Frustration & Joy
일 시 : 2004. 2. 6(금)~19(목)(14일간) | 장 소 : 인천종합문화예술회관
인천여성작가 103명 | 출품작품수 533점
워크숍 (기영미 박사 초청)

2006 Pre-국제인천여성미술비엔날레
Pre-International Incheon Women Artists' Biennale

행사주제_ 여성미술의 새로운 조망 The Vision of Women Art
일 시 : 2006. 8. 5(토)~9. 10(일)(37일간) | 장 소 : 인천종합문화예술회관 외 5곳
출품작가 417명 (여성 : 327명 남성 : 90명) | 출품작품수 1564점
분천시_ 국내여성작가전 (117명, 117점) | 특별전_ 한국자수박물관 소장품전 (107점)
조율전_ 국내남성작가전 (90명, 90점) | 참여전_ (210명, 1250점)
국제학술회의 (Susan Griffin, Liao Wen 초청)

2007 국제인천여성미술비엔날레
International Incheon Women Artists' Biennale

최초로 세계여성미술비엔날레를 개최하여 세계미술사에 큰 획을 그었으며 여성미술을 집중적으로 감상하는 전사를 마련

행사주제_ 문을 두드린다 Knocking on the door
일 시 : 2007. 11. 10(토)~12. 30(일)(51일간) | 장 소 : 인천종합문화예술회관 외 2곳
출품작가 22개국 429명 (여성 : 341명, 남성 : 88명) | 출품작품수 1700여점
분천시_ 12개국 33명, 66점 | 특별전_ 15개국 62명, 120여점
조율전_ 부부작가 19 couple 38여점 | 참여전_ 296명, 1467점
학술강연 (John C. Welchman 교수 초청)

2008 심포지엄 Symposium

- 제1차_ 인천여성미술비엔날레의 성공적 추진을 위한 1차 심포지엄
"인천여성미술비엔날레 발전적 모색"
(2008. 6. 2) 인천종합문화예술회관 국제회의장
- 제2차_ 인천여성미술비엔날레의 성공적 추진을 위한 2차 심포지엄
"인천여성미술비엔날레 설계"
(2008. 12. 1) 인천종합문화예술회관 국제회의장

Greetings

Mayor's Greetings

Incheon Metropolitan City is pleased to announce its new beginning with the International Incheon Women Artists' Biennale, an art platform for artists worldwide. As the hosting city of the first Women Artists' Biennale and the gateway to Korea, Incheon now represents the most historic arts event in the world of women artists.

The International Incheon Women Artists' Biennale will introduce a number of high-quality works of internationally renowned women artists as to differentiate from other biennales held throughout the world, which will contribute to art exchanges globally and hence aid through communication the significant cause of World Peace.

Head of Biennale **Ahn Sang-Su** (Mayor of Incheon City)

President's Invitation

The International Incheon Women Artists' Biennale is the unique biennial organized by women artists to promote the creativity of women artists. The Biennale is composed of the Main Exhibition that is exclusively focused on women artists' works; the Tuning Exhibition featuring both male and female artists that is critically focused on the structure of various social conflicts and institutional biases against women and femininity; and the Participation Exhibition that is open to women artists supporting the development of the Biennale.

Accompanied by the event of 2009 Incheon Global Fair & Festival, the International Incheon Women Artists' Biennale will mark and celebrate the historical moment of the grand opening of the Incheon Art Platform, a creative space for art that has emerged from the remodeling transformation of 13 historical buildings, such as the former Korea Express, that preserves the stories and memories of Korea opening its port to the world.

It is my pleasure to invite you to this impressive event presenting a significant number of works and performances of world-renowned artists, in addition to an international symposium. The 2009 International Incheon Women Artists' Biennale will offer you an opportunity to enjoy new and diverse arts from around the world that will enhance our emotional life and experience of pleasure.

President of the Organizing Committee **Kwon Kyung-Ae** (Dongduk Women's University, Professor)

Main Exhibition

Commissioner : **Eunhee Yang**

Curator : **Thalia Vrachopoulos** (Art Director, Tenri Cultural Art Center, New York/ Professor of Art History,

John Jay College, New York)

Sutthirat Supaparinya (Curator/Artist)

'So Close Yet So Far Away'

Invites international women artists from more than 20 countries
Explores women artists' perception of space in the global age

The 2009 Incheon Women Artists' Biennale explores women artists' understanding and perception of space; where they reside, struggle, and strive to realize their dreams. It embraces their psychological, personal, and individual spaces as well as the socio-political and cultural realms that affect and influence their existence as artists and women.

The global stage imposes upon us quantum leap transformations, often those escaping even our personal radar, one that is vital to our survival.

Women artists as individuals are faced with competitive physical, social, and cyberspace situations. The 2009 Incheon Women Artists' Biennale welcomes international contemporary artists who embrace these issues to exhibit under three subsections entitled "Personal Territory," "Fluid Interior," and "Contested Space."

Programs

- Performances
- International Symposium
- Lectures
- Artists Talks
- Exhibition Tour with Commissioner
- Educational Programs
- Exhibition Tour

Exhibition "Tuning"

The Chair of Operating Committee **Heng-Gil Han** Curator of Jamaica Center for Arts & Learning, New York

The 21st Century, The Feminine Century, and the Century of Diversity and Hope

Female and male artists from around the globe
A project to render a future society, culture and subjectivity

The 21st Century Exhibition, presented for the Tuning exhibition of the 2009 Incheon Women Artists' Biennale, envisions the 21st century as feminine, diverse, and free of any political, racial or sexual oppression.

It aims to provide the citizens of and visitors to Incheon with a comprehensive platform and an opportunity to research, learn about, and discuss various subjects related to the question of society seen from a feminine perspective and a perspective based on the diversity of human subjectivity. A collection of works, catalogs, and texts, as well as a series of films, performances, and discussions, will constitute a hybrid exhibition that is multidimensional, multifaceted and multidisciplinary.

The 21st Century Exhibition renders - and attempts to provide the basis for - the future art public and the society of the 21st century rather than representing the current reality. Consequently, the exhibition, with its objectives to engineer a future society, culture and new subjectivity, will be more of a process-oriented activity than a display of finished products.

Exhibition "Participation"

Alone Together

Booth solo exhibitions by women artists who actively work in the fine art circle in Korea

International Symposium

Organizer : **Eunhee Yang**

"Women Artists in the 'Post-Feminism' Era"

The symposium aims at examining diverse creative activities by women artists in the so-called 'Post-Feminism' age. To be held during the first week of the Biennale, the symposium will invite national and international scholars, critics, curators and artists to discuss the specific challenges and changes of contemporary women artists.